

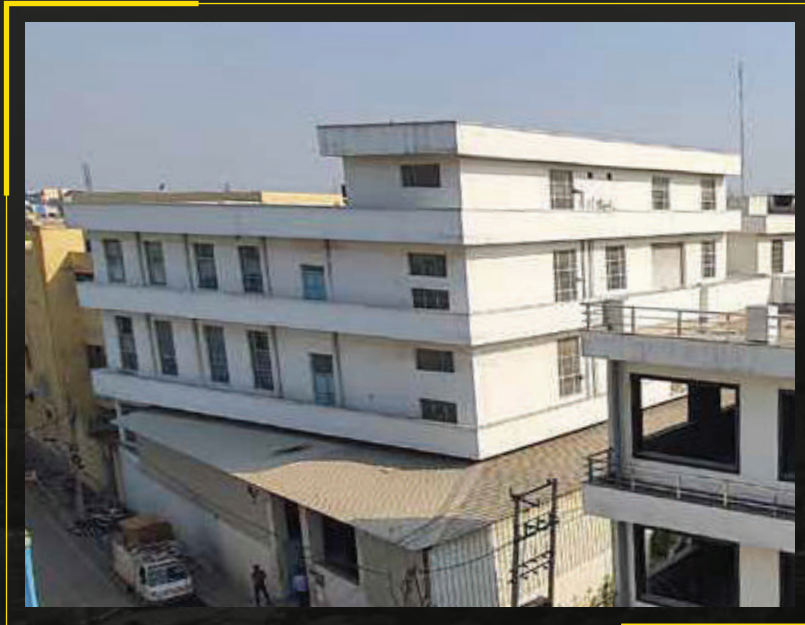


SAFETY
LEADS TO
PRODUCTIVITY

MANUFACTURERS OF SAFETY FOOTWEAR



LEADING MANUFACTURER, AND EXPORTER OF SAFETY FOOTWEAR



OUR STRENGTH

- We have the strength of more than 700 people in our organization
- Our production area is approx. 1, 20,000 Sq. feet's and growing
- Our manufacturing capability is over 25,000 pairs per day
- We have a wide range of products & we also have export facilities
- We grow with our Channel Partners, Dealers & Resellers. They are equally responsible for the name & recognition HILLSON has got in the country

IS : 12254



CM/L-9811890

POLY VINYL
CHLORIDE
(PVC)
INDUSTRIAL
BOOTS.

IS : 15298 : PART 2



CM/L-9954209

SAFETY,
PROTECTIVE AND
OCCUPATIONAL
FOOTWEAR FOR
PROFESSIONALS



SAUDI
ARABIAN
STANDARDS
ORGANIZATION

IS : 15298 : PART 4



CM/L - 9512458118

SAFETY,
PROTECTIVE AND
OCCUPATIONAL
FOOTWEAR FOR
PROFESSIONALS

- We have more than 40 years of experience in Indian footwear industry
- We are among the top safety footwear companies in India
- We always provide the best quality products at reasonable prices
- From incoming raw material to outgoing finished footwear, we employ very strict quality control measures



HILLSON SMART LEADER RANGE

- | | | |
|---|-------------------|--|
| 1 | UPPER | Durable and Breathable Real Leather |
| 2 | VAMP LINING | Non-Woven Fabric Sweat Absorbing & Odor Free |
| 3 | TONGUE CUSHION | High-Density Foam |
| 4 | QUARTER LINING | Drylex/Cambrelle Fabric |
| 5 | COLLAR | PU Foam with 3 Year Anti-Peel Properties |
| 6 | COUNTER STIFFENER | Thermoplastic with Suitable Hardness of Heel Support |



- | | | |
|----|-----------------|--|
| 7 | TOE CAP | Impact Resistant, Tested for Energy Level of 200J |
| 8 | TOE CAP PADDING | Cushioned for Extra Comfort |
| 9 | SOLE | Anti-Skid Design, Oil & Acid Resistant |
| 10 | STEEL MIDSOLE | PU Single/Double Moulded Density, Anti-Static Sole Penetration Resistant |
| 11 | INSOCKS | Ortho Bounce Absorbing/Soft EVA for Rebound Comfort |

SOCCER

WEIGHT : 1010 gm
 SIZES : 5 to 11 | 39 to 45
 TOE CAP : ISI-15298 PART 2
 SOLE : Dual Density PU Sole
 UPPER : Real Leather



IS : 15298 : PART 2

 CM/L-9954209



IS : 15298 : PART 2

 CM/L-9954209



PANTHER

WEIGHT : 1050 gm
 SIZES : 5 to 11 | 39 to 45
 TOE CAP : ISI-15298 PART 2
 SOLE : Dual Density PU Sole
 UPPER : Real Leather

MIRAGE

WEIGHT : 1080 gm
 SIZES : 5 to 11 | 39 to 45
 TOE CAP : ISI-15298 PART 2
 SOLE : Dual Density PU Sole
 UPPER : Real Leather

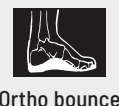
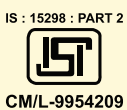


IS : 15298 : PART 2

 CM/L-9954209



*Weight is of size 8 for the reference only



IS : 15298 : PART 2



CM/L-9954209



NUCLEUS

WEIGHT : 1130 gm
 SIZES : 5 to 11 | 39 to 45
 TOE CAP : ISI-15298 PART 2
 SOLE : Dual Density PU Sole
 UPPER : Real Leather
 INSOCKS : Memory Comfort Insocks



IS : 15298 : PART 2



CM/L-9954209

100 %
Metal Free

MF 01 (BLACK)

WEIGHT : 830 gm
 SIZES : 5 to 11 | 39 to 45
 TOE CAP : ISI-15298 PART 2
 SOLE : Mono Density PU Sole
 UPPER : Real Leather

MF 01 (BROWN)

WEIGHT : 830 gm
 SIZES : 5 to 11 | 39 to 45
 TOE CAP : ISI-15298 PART 2
 SOLE : Mono Density PU Sole
 UPPER : Real Leather

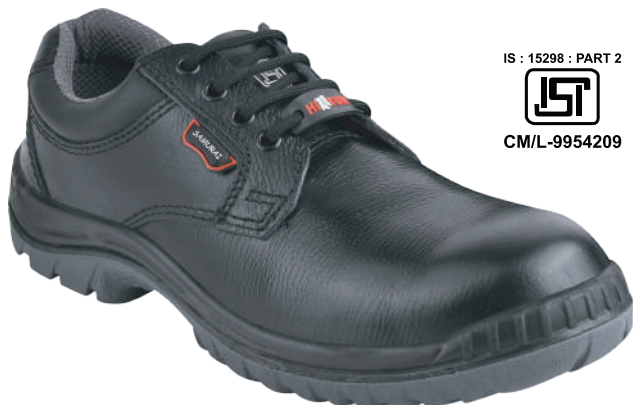


IS : 15298 : PART 2



CM/L-9954209

100 %
Metal Free



IS : 15298 : PART 2



CM/L-9954209



SAMURAI

WEIGHT : 1050 gm
 SIZES : 5 to 11 | 39 to 45
 TOE CAP : ISI-15298 PART 2
 SOLE : Dual Density PU Sole
 UPPER : Real Leather

*Weight is of size 8 for the reference only

IS : 15298 : PART 2



CM/L-9954209



Steel toecap



Oil & acid resistant



Chemical resistant



Ortho bounce



Anti static

LF 02

WEIGHT : 705 gm
 SIZES : 3 TO 8
 TOE CAP : ISI-15298 PART 2
 SOLE : Mono Density PU Sole
 UPPER : 1.8 - 2.00mm
 Real Leather

Exclusively Designed as per Indian Female Feet Size



IS : 15298 : PART 2

 CM/L-9954209



IS : 15298 : PART 2

 CM/L-9954209

JAGUAR

WEIGHT : 920 gm
 SIZES : 5 to 11 | 39 to 45
 TOE CAP : ISI-15298 PART 2
 SOLE : Mono Density PU Sole
 UPPER : 1.8 - 2.00mm
 Real Leather

BASE

WEIGHT : 940 gm
 SIZES : 5 to 11 | 39 to 45
 TOE CAP : ISI-15298 PART 2
 SOLE : Mono Density PU Sole
 UPPER : 1.8 - 2.00mm
 Real Leather



IS : 15298 : PART 2

 CM/L-9954209

*Weight is of size 8 for the reference only

IS : 15298 : PART 2

 CM/L-9954209



Steel toecap



Oil & acid resistant



Chemical resistant



Anti static

IS : 15298 : PART 2



CM/L-9954209



▶ ARGO (BLACK)

WEIGHT : 920 gm
 SIZES : 5 to 11 | 39 to 45
 TOE CAP : ISI-15298 PART 2
 SOLE : Mono Density PU Sole
 UPPER : 1.8 - 2.00mm Real Leather
 INSOCKS : Memory Comfort Insocks

IS : 15298 : PART 2



CM/L-9954209

▶ ARGO (BROWN)



WEIGHT : 920 gm
 SIZES : 5 to 11 | 39 to 45
 TOE CAP : ISI-15298 PART 2
 SOLE : Mono Density PU Sole
 UPPER : 1.8 - 2.00mm Real Leather
 INSOCKS : Memory Comfort Insocks

▶ APACHE

WEIGHT : 940 gm
 SIZES : 5 to 11 | 39 to 45
 TOE CAP : ISI-15298 PART 2
 SOLE : Mono Density PU Sole
 UPPER : 1.8 - 2.00mm
 Real Leather

IS : 15298 : PART 2



CM/L-9954209



*Weight is of size 8 for the reference only

IS : 15298 : PART 2



CM/L-9954209



Steel toecap



Oil & acid resistant



Chemical resistant



Anti static

SPORTY

WEIGHT : 1230 gm

SIZES : 5 to 11 | 39 to 45

TOE CAP : Steel Toe

SOLE : PVC Dual Density

UPPER : Synthetic Leather

**ROCKLAND**

WEIGHT : 1020 gm

SIZES : 5 to 11 | 39 to 45

TOE CAP : Metal Toe

SOLE : Mono Density PU Sole

UPPER : 1.8 - 2.00 mm
Real Leather

**WORKOUT**

WEIGHT : 1300 gm

SIZES : 5 to 11 | 39 to 45

TOE CAP : Steel Toe

SOLE : PVC Dual Density

UPPER : Synthetic Leather



*Weight is of size 8 for the reference only

BESTON

WEIGHT : 1040 gm
SIZES : 5 to 11 | 39 to 45
TOE CAP : Steel Toe
SOLE : PVC Injected
UPPER : Synthetic Leather

**U-4**

WEIGHT : 980 gm
SIZES : 5 to 11 | 39 to 45
TOE CAP : Steel Toe
SOLE : PVC Injected
UPPER : Synthetic Leather

**2101**

WEIGHT : 1000 gm
SIZES : 5 to 10 | 39 to 44
TOE CAP : Steel Toe
SOLE : Mono Density PU
UPPER : 1.8 - 2.00 mm
Real Leather



*Weight is of size 8 for the reference only

▶ **SWAG 1903**

WEIGHT : 1050 gm

SIZES : 6 to 11 | 40 to 45

TOE CAP : Metal Toe

SOLE : Thermo Foaming Polymer

UPPER : Synthetic Leather

▶ **SWAG 1904**

WEIGHT : 1050 gm

SIZES : 6 to 11 | 40 to 45

TOE CAP : Metal Toe

SOLE : Thermo Foaming Polymer

UPPER : Synthetic Leather

▶ **SWAG 1906**

WEIGHT : 1050 gm

SIZES : 6 to 11 | 40 to 45

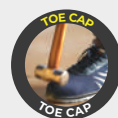
TOE CAP : Metal Toe

SOLE : Thermo Foaming Polymer

UPPER : Water Repellent Textile



*Weight is of size 8 for the reference only



▶ **SWAG 1907**

WEIGHT : 1050 gm

SIZES : 6 to 11 | 40 to 45

TOE CAP : Metal Toe

SOLE : Thermo Foaming Polymer

UPPER : Water Repellent Textile

▶ **SWAG 1908**

WEIGHT : 1050 gm

SIZES : 6 to 11 | 40 to 45

TOE CAP : Metal Toe

SOLE : Thermo Foaming Polymer

UPPER : Water Repellent Textile

▶ **SWAG 1909**

WEIGHT : 1050 gm

SIZES : 6 to 11 | 40 to 45

TOE CAP : Metal Toe

SOLE : Thermo Foaming Polymer

UPPER : Water Repellent Textile



*Weight is of size 8 for the reference only



OUR DEALERS ARE SPREAD ALL ACROSS THE NATION



sales@hillsonshoes.com

www.hillsonshoes.com

Haryana, India

